

# AIS WatchMate

# AIS Display and Collision Warning System

built for sailors by sailors



**Alarms based on closest point of approach (CPA) or range**



**Prioritised identification of targets that pose the greatest risk**



**Filters eliminate false alarms when navigating in crowded shipping areas**

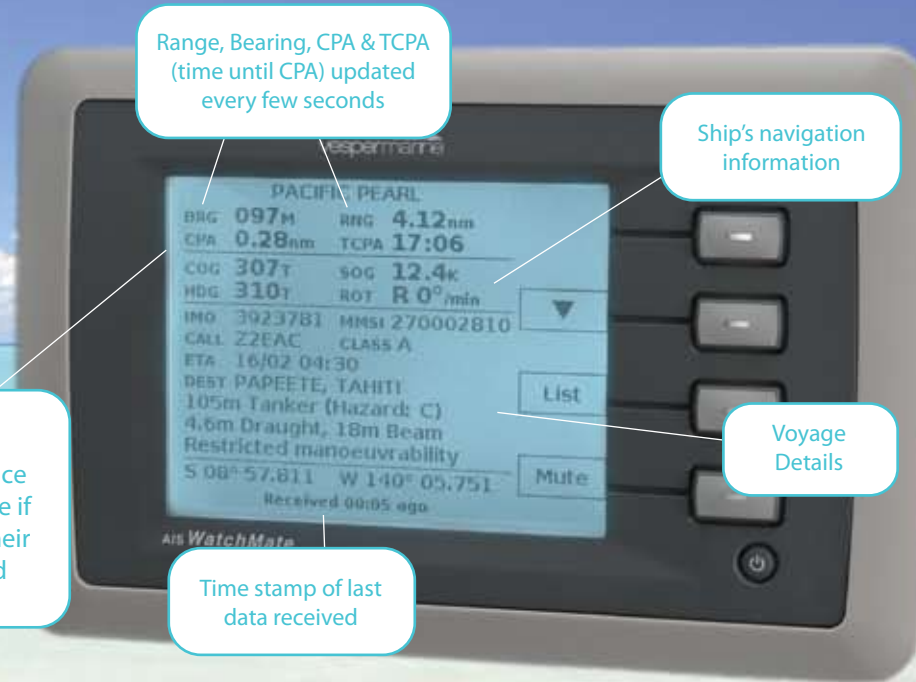


**Ideal for short handed crews**



Bearing shown in true, magnetic or relative

Range



Range, Bearing, CPA & TCPA (time until CPA) updated every few seconds

Ship's navigation information

Voyage Details

Time stamp of last data received

The CPA is the minimum distance a vessel will come if both maintain their course & speed



**Displays all AIS data plus safety messages & aids to navigation**



**AIS transponders are mandatory on nearly all commercial ships**



## Benefits and Features

**Alarms** alert you well in advance if you are in danger of a collision

**Organises targets** by priority for operation in high traffic areas

**Easy to interpret** display immediately shows all the info you need

**Increased safety** offshore or in busy shipping areas

**Safety at night** or in bad weather when it is difficult to see ship's lights or direction

**Positive identification** of targets with the vessel id and name for voice and DSC communication

**AIS allows you to "see"** around islands and headlands when radar is blocked

**Customisable** profiles (anchored, harbour, coastal and offshore) quickly tailor alarm settings to fit your sailing environment

**Simple to use** with on-screen help for every setting

**Operates on very low power** so it can be left running at all times

**No computer** or chart plotter is needed

## AISWatchMate<sup>®</sup>

collision warning system

"The AISWatchMate is the most cost-effective marine safety advance in decades. Given the choice of it or a radar, I'd pick the AISWatchMate, at a fraction of the cost."

Cap'n Fatty Goodlander, *Wild Card*, Singapore

"The AISWatchMate runs like a charm and is more than I imagined. Hassle free."

Ken J., *Panche*, Australia

"A great piece of safety gear! It has proven to be so simple and intuitive to use. We couldn't be more satisfied."

Bob and Laurie W., *Shearwater*, Fiji

"The system was very simple to install and works flawlessly. I use your AISWatchMate in place of a radar. It has proved to be a lifesaver on several occasions. Literally!"

Bob A., *Mischief*, St. Petersburg, Florida

"There are two other boats cruising with us that also have an AISWatchMate. All are of the same opinion, it's the best way of keeping a lookout for shipping, bar none."

John & Lyn Martin, *Windflower*, Tonga  
Island Cruising Association

## AISWatchMate<sup>®</sup>

collision warning system

vespermarine  
built for sailors by sailors

[www.vespermarine.com](http://www.vespermarine.com)  
[info@vespermarine.com](mailto:info@vespermarine.com)

Increase your  
**safety**  
around the world